

S55148

1000mL PRE-VAC DRAINAGE BOTTLE



- Sterile interior & exterior bottle design allows for fluid sampling & specimen testing.
- Sterile bottle includes attached drain line with male luer connection and roller clamp.
- Increase nurse flow efficiency: No need to inventory and pick spike kit/separate drain line for procedure.
- Vacuum indicator confirms adequate vacuum is available for drainage
- Approximately 695mmHg of negative pressure provides effective drainage times for patients.
- Accurate drainage volumes can be measured and documented via graduated markings on bottle.
- Reduced risk of infection due to fewer line connections during initial set up and connecting additional bottles for larger volumes
- Durable medical grade plastic material contributes significantly to safety factor when compared to glass counterpart.

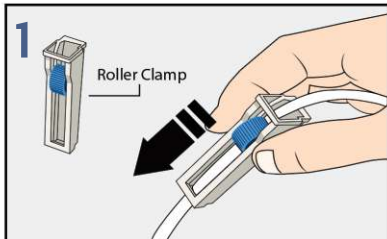
Manufactured Exclusively for:
MedQuest Medical Inc.
45 Midpark Crescent
London, ON Canada
N6N 1A9

Contact our customer service team
or your local sales representative
for more information.

Customer Inquiries:
customer.service@medquestmedical.com
www.medquestmedical.com
phone & fax: **888-864-4442**

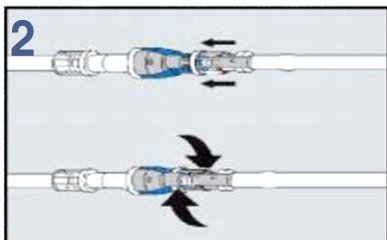


MEDQUEST PRE-VAC BOTTLES DRAINAGE INSTRUCTIONS



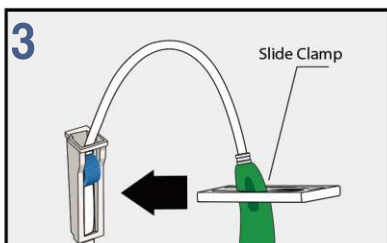
1

Remove the bottle from its packaging. **Close the roller clamp** on the drainage line completely. **Remove blue cap** on male luer connector.



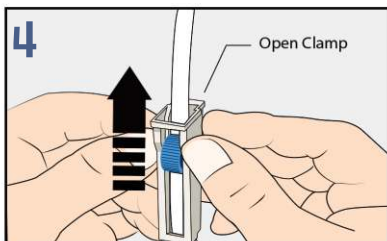
2

Attach the male luer connector on the drain line tubing to the female luer connector on the drainage catheter or needle by **pushing in** and **turning clockwise** to tighten.



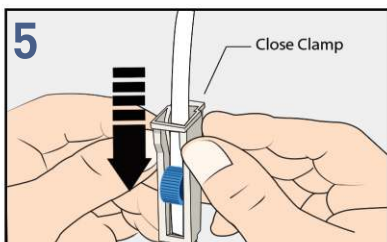
3

Release the white slide clamp on the top of the bottle by pushing it forward until it no longer pinches the green tube closed.



4

Begin drainage by **opening the roller clamp** on the drainage line. If the patient feels discomfort, flow rate can be reduced by adjusting roller clamp.



5

When the flow stops or the bottle is filled, **close the roller clamp** on the drainage line.



6

Disconnect the drain line from the drainage catheter by **turning counter clockwise** and **pulling straight back**. **Replace blue cap** on the male luer connector to prevent inadvertent leakage of fluid. If an additional bottle is needed, repeat steps 1 through 5.