

# S55120

## 600mL PRE-VAC DRAINAGE BOTTLE



- Sterile interior & exterior bottle design allows for fluid sampling & specimen testing.
- Sterile bottle includes attached drain line with male luer connection and roller clamp.
- Increase nurse flow efficiency: No need to inventory and pick spike kit/separate drain line for procedure.
- Vacuum indicator confirms adequate vacuum is available for drainage
- Approximately 640mmHg of negative pressure provides effective drainage times for patients.
- Accurate drainage volumes can be measured and documented via graduated markings on bottle.
- Reduced risk of infection due to fewer line connections during initial set up and connecting additional bottles for larger volumes
- Durable medical grade plastic material contributes significantly to safety factor when compared to glass counterpart.

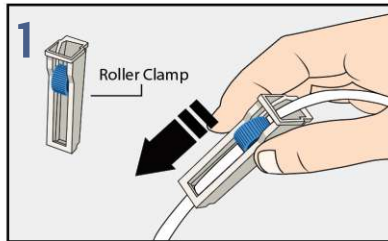
Manufactured Exclusively for:  
**MedQuest Medical Inc.**  
45 Midpark Crescent  
London, ON Canada  
N6N 1A9

Contact our customer service team  
or your local sales representative  
for more information.

Customer Inquiries:  
customer.service@medquestmedical.com  
**www.medquestmedical.com**  
phone & fax: **888-864-4442**

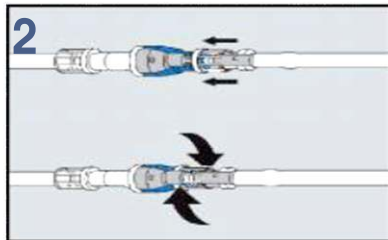


# MEDQUEST PRE-VAC BOTTLES DRAINAGE INSTRUCTIONS



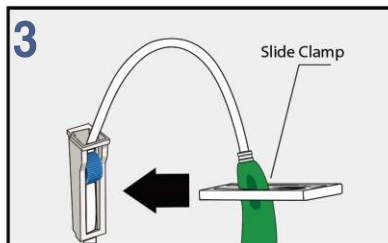
# 1

Remove the bottle from its packaging. **Close the roller clamp** on the drainage line completely. **Remove blue cap** on male luer connector.



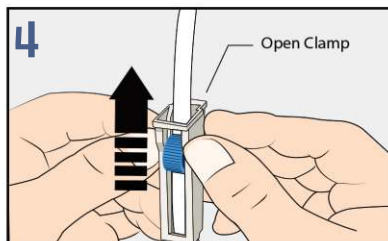
# 2

Attach the male luer connector on the drain line tubing to the female luer connector on the drainage catheter or needle by **pushing in** and **turning clockwise** to tighten.



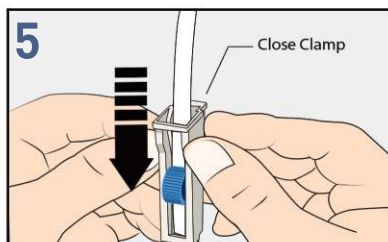
# 3

**Release the white slide clamp** on the top of the bottle by pushing it forward until it no longer pinches the green tube closed.



# 4

Begin drainage by **opening the roller clamp** on the drainage line. If the patient feels discomfort, flow rate can be reduced by adjusting roller clamp.



# 5

When the flow stops or the bottle is filled, **close the roller clamp** on the drainage line.



# 6

Disconnect the drain line from the drainage catheter by **turning counter clockwise** and **pulling straight back**. **Replace blue cap** on the male luer connector to prevent inadvertent leakage of fluid. If an additional bottle is needed, repeat steps 1 through 5.